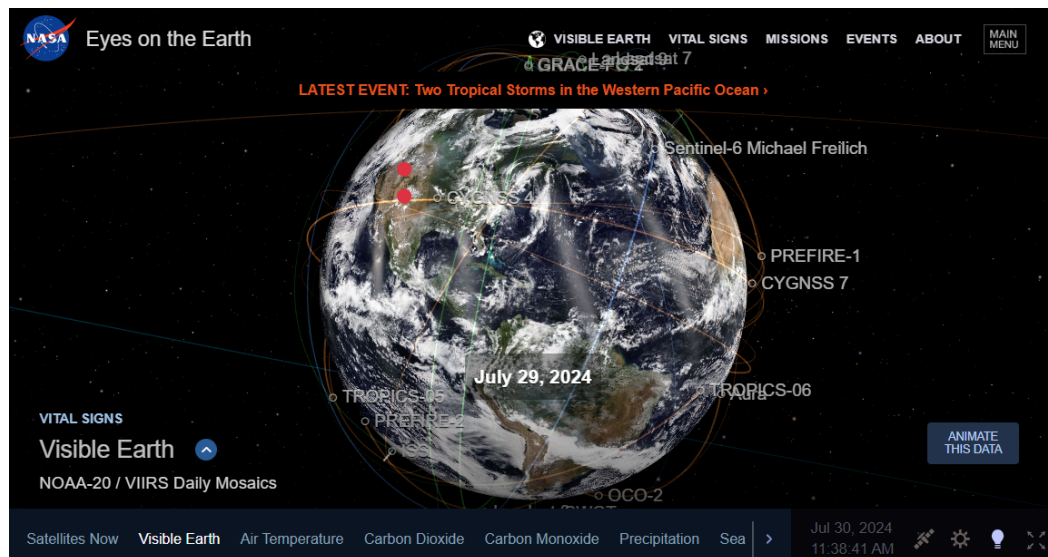


Some Climate Dashboards

Here are a few “Dashboards” which can put you in touch with how things are going. ENJOY!

Real Time Information

NASA: [Eyes on the Earth](#) [NOTE the other information available]



NASA: [Carbon Dioxide | Vital Signs – Climate Change](#)

NOTE the other measurements available]

[Carbon Dioxide](#) [Global Temperature](#) [Methane](#) [Arctic Sea Ice Minimum Extent](#) [Ice Sheets](#) [Sea Level](#) [Ocean Warming](#)

Carbon Dioxide

LATEST MEASUREMENT: June 2024

427 ppm

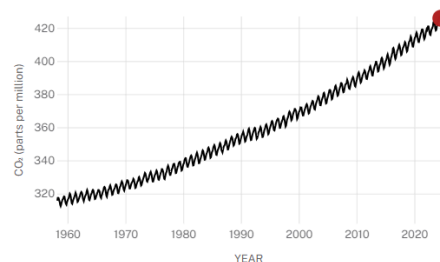
[Download Data](#)

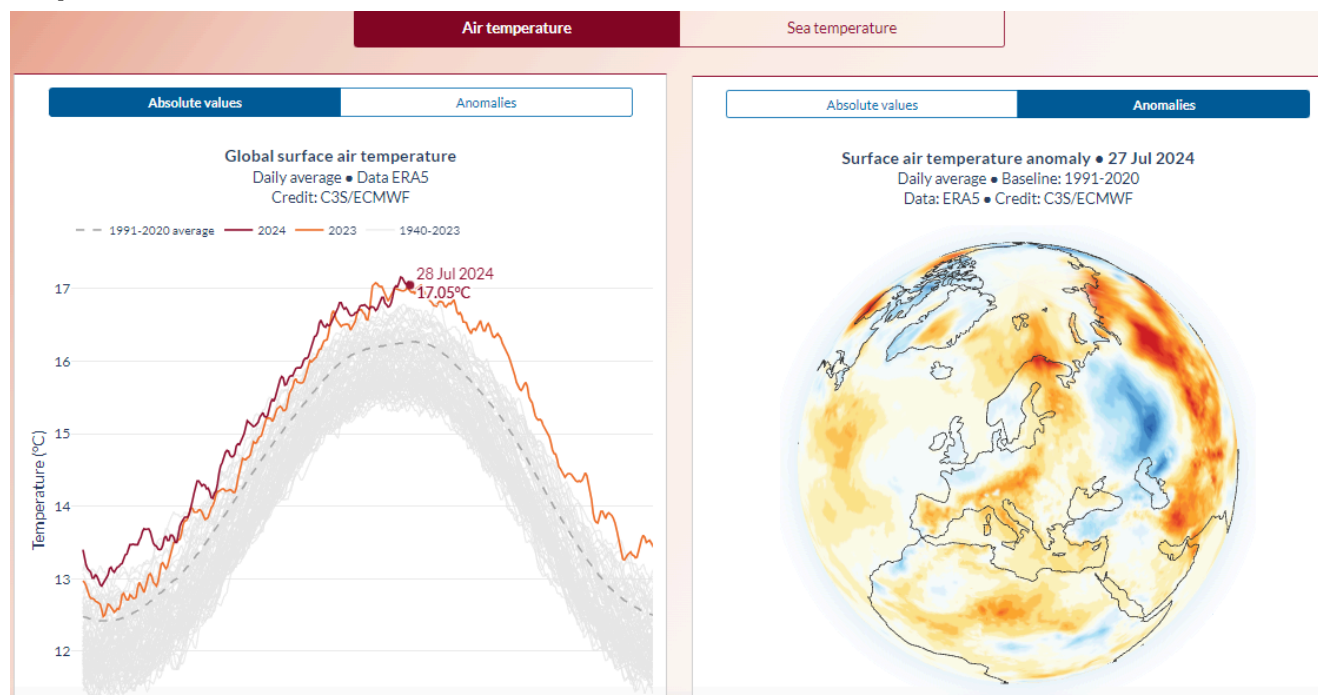
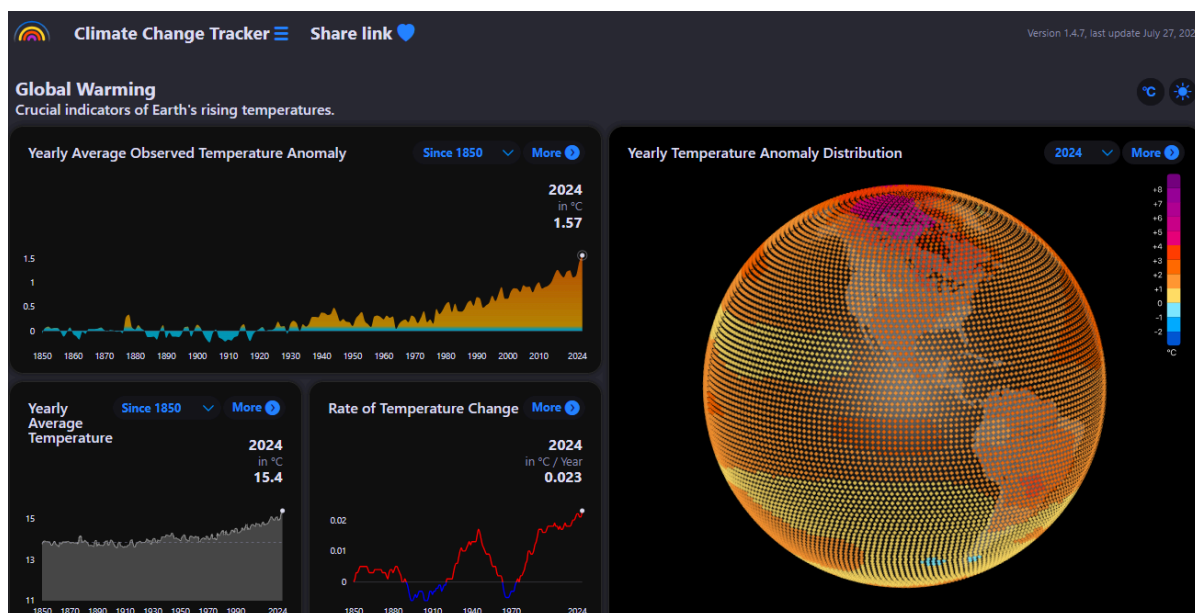
Key Takeaway:

Carbon dioxide in the atmosphere warms the planet, causing climate change. Human activities have raised the atmosphere's carbon dioxide content by 50% in less than 200 years.

DIRECT MEASUREMENTS: 1958-PRESENT

Data source: NOAA, measured at the Mauna Loa Observatory



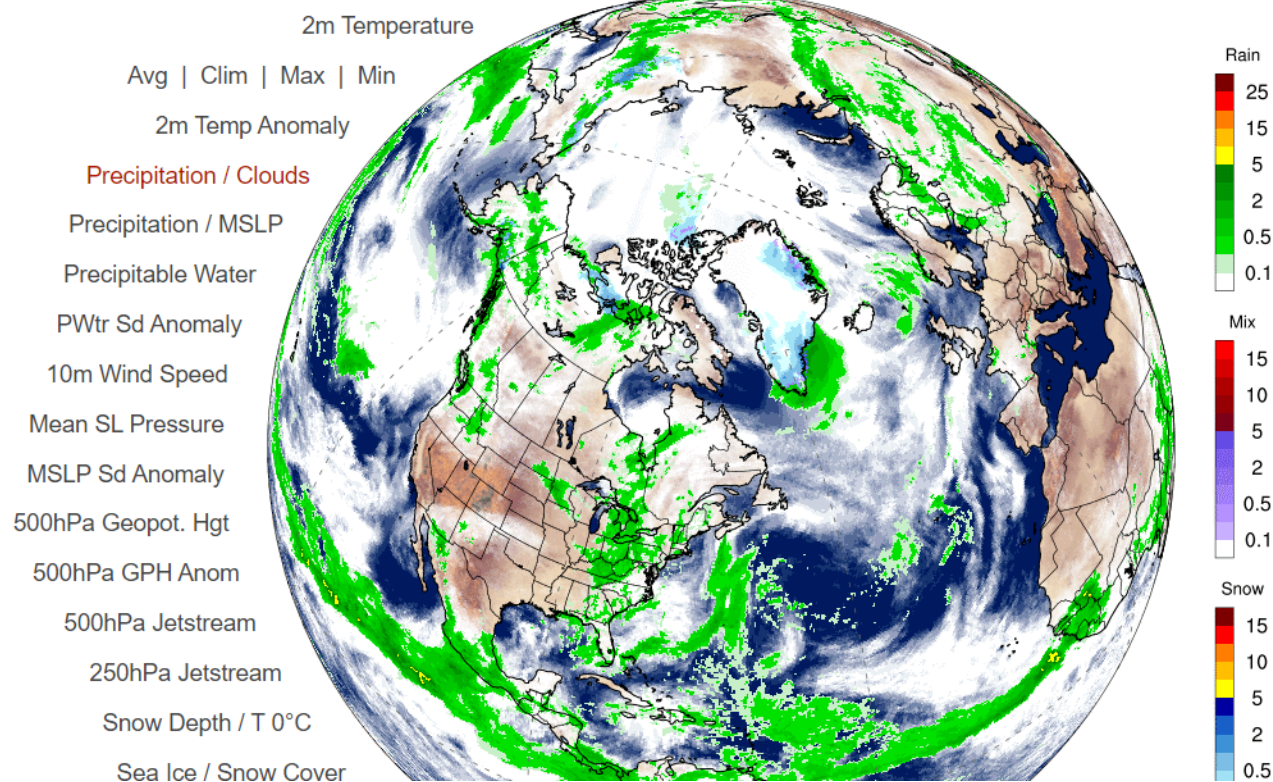
Copernicus [Climate Pulse](#)CLIMATE CHANGE TRACKER [Global Warming Dashboard and Data: ClimateChangeTracker.org](#)

CLIMATE REANALYZER [Today's Weather Maps](#)

[About this page](#)

GFS Precipitation (mm/h), Clouds (%)
1-day Avg | Tue, Jul 30, 2024

ClimateReanalyzer.org
Climate Change Institute | University of Maine



HANSEN - COLUMBIA UNIVERSITY [Global Temperature](#) [NOTE table of contents below]

Global Temperature

Additional figures are on [More Figures](#) page.

*** Monthly and Annual Temperature Tables ***

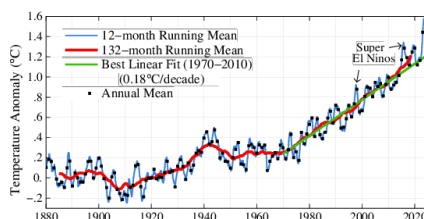
[1880-1920 Base Period](#)
[1951-1980 Base Period](#)

***** Annual Mean Temperature Ranking (Top 10) *****

The top 10 warmest years were all in the past 10 years (2014-2023)

[1880-1920 Base Period](#)
[1951-1980 Base Period](#)

With 1880-1920 Base Period



In this graph the base period is switched from our traditional 1951-1980 to 1880-1920 for the reasons given in "[A Better Graph](#)", but of course we continue to also produce our graphs with the 1951-1980 base period, as shown below. Data through June 2024 are used for computing the means. Figures in [PDF](#), last modified 2024/07/10, now with GHCN v4 and ERSST v5.)

With Predictions Updated on 2024/06/11
 With Current Trend Updated on 2024/06/26

[Makiko's Page](#)

Critical Climate Diagnostics and Feedbacks

- [Global Temperature](#) (2024/07/10)
 - [El Nino & La Nina](#) (last modified 2024/07/03)
- [Precipitation](#) (last modified 2024/06/18)
- [Wind](#)
 - [Hurricanes](#) (last modified 2024/07/08)
 - [Tornadoes](#) (last modified 2024/07/16)
- [Wildfires](#) (last modified 2024/07/29)
- [Sea and Ice](#)
 - [Sea Level](#) (last modified 2024/04/02)
 - [Ice Sheet Disintegration](#) (last modified 2024/07/02)
 - [Sea Ice Area](#) (last modified 2024/07/02)
- [Species Loss](#) (last modified 2024/02/08)

Fossil Fuel CO₂ Emissions and Energy Use

- [Carbon Dioxide Emissions](#) (last modified 2023/12/25)
- [Energy Consumption](#) (last modified 2024/07/03)
- [Carbon Intensity](#) (last modified 2023/08/20)

Climate Forcings

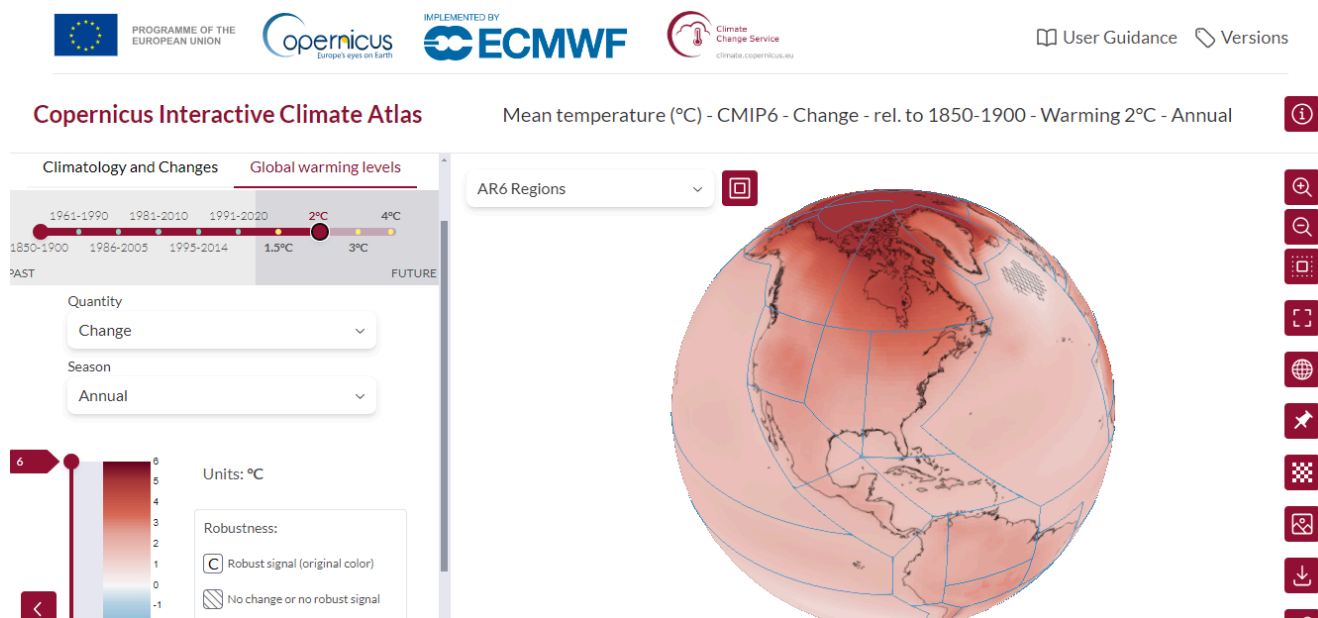
- [Well-Mixed Greenhouse Gases](#) (last modified 2024/06/07)
- [Solar Irradiance](#) (last modified 2024/07/01)
- [Tropospheric Aerosols](#) (old page + 2023/11/03)
- [Summary](#) (last modified 2024/02/02)

Paleoclimate

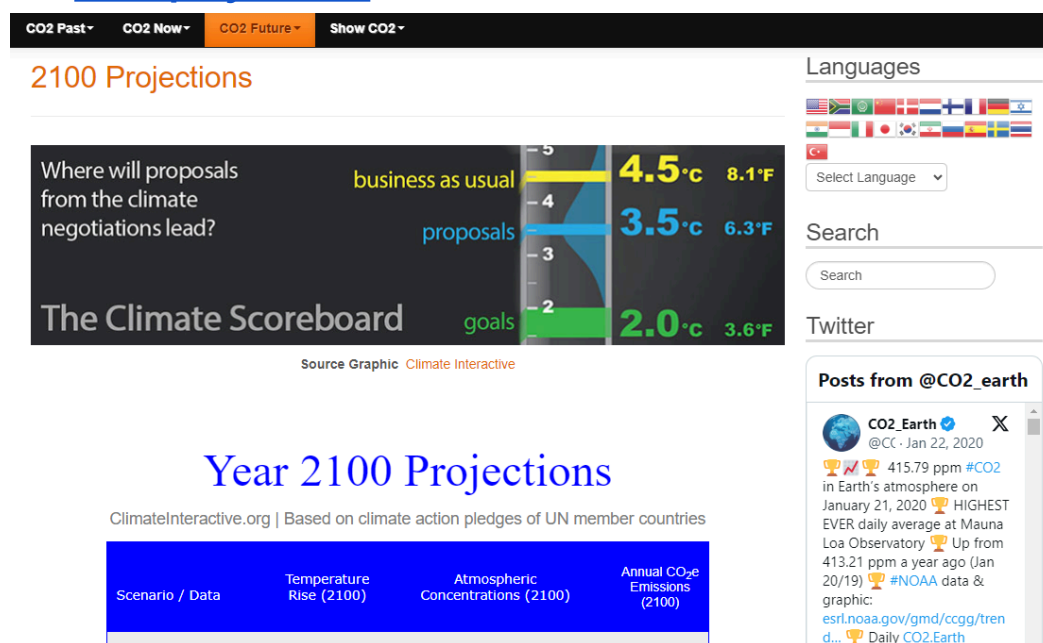
- [Orbital Parameters](#) (last modified 2024/05/11)
- [Updated Figures](#) (last modified 2024/05/07)

Modeling the Future

European Union: [Copernicus Interactive Climate Atlas](#)



CO2 EARTH: [2100 projections](#)



Approximate "Cheat Sheet":

1 meter → 3 feet 1 degree Celsius (°C) → 2 degree Fahrenheit (°F)
 ppm = parts per million CO₂ = Carbon Dioxide
 1 tonne = 1000 kilograms = 2205 pounds 1 gigatonne (1 Gt) = 1 billion tonnes
 1 trillion tonnes (1Tt) = 1000 gigatons

GOOD NEWS CORNER

[https://apple.news/ARDGEDrtmQF6](https://apple.news/ARDGEDrtmQF6B14v82fOn2w)

[B14v82fOn2w](https://apple.news/ARDGEDrtmQF6B14v82fOn2w)



California achieves 100 days of 100% electricity demand met by renewables

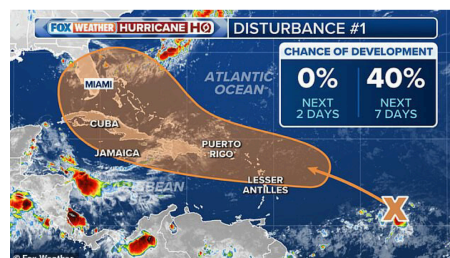
Michelle Lewis | Jul. 29th 2024 7:39 am PT

In a major milestone, July 28 marked the 100th day of a 144-day stretch in which California supplied 100% of its electricity demand with renewables.

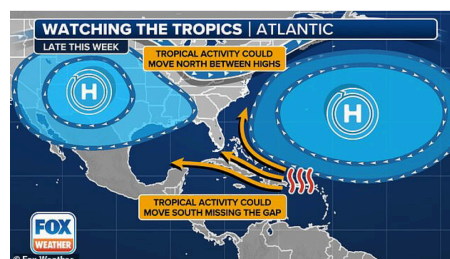
The 100 days of continuity means not that renewables are powering the grid for the entire day, but that it's happening consistently on a daily basis – and that's

And this "good news" is that we've learned about these things!

'Folks anywhere along any part of the Florida coastline ought to keep an eye on this. August looks busy as it tends to often be!'



The chance of the low pressure becoming a storm have jumped from 10 to 40% in two days

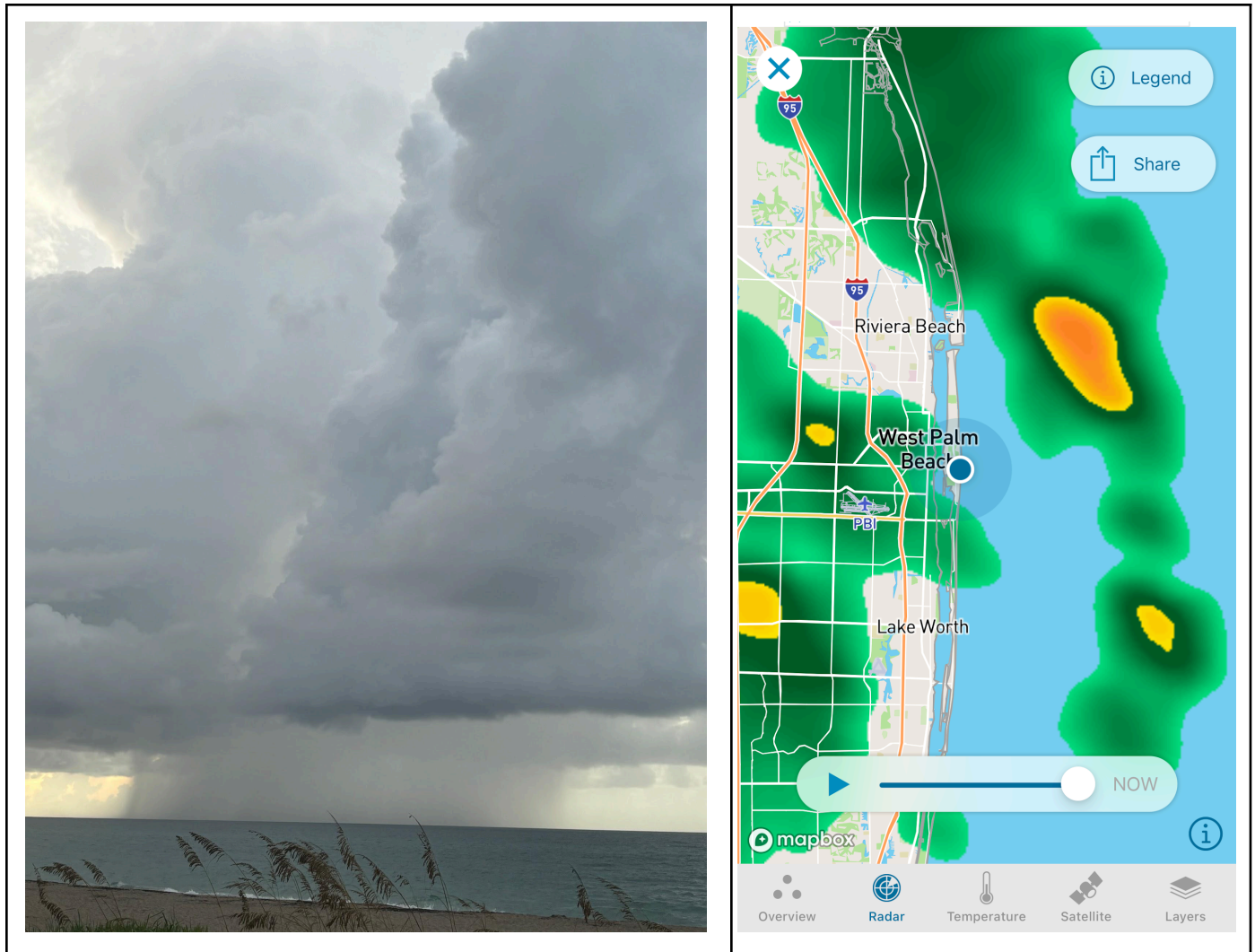


Where it makes land depends on two high pressure systems over Bermuda and the plains

The NHC first raised the alarm on Friday after spotting the tropical disturbance and seeing it was likely to clash with an approaching tropical wave.

Our Natural World - This is Us

**Thunderstorm off of Palm Beach July 19, 2024 with the storm on radar
(the big yellow blob)**



Sands of the Sahara this last week